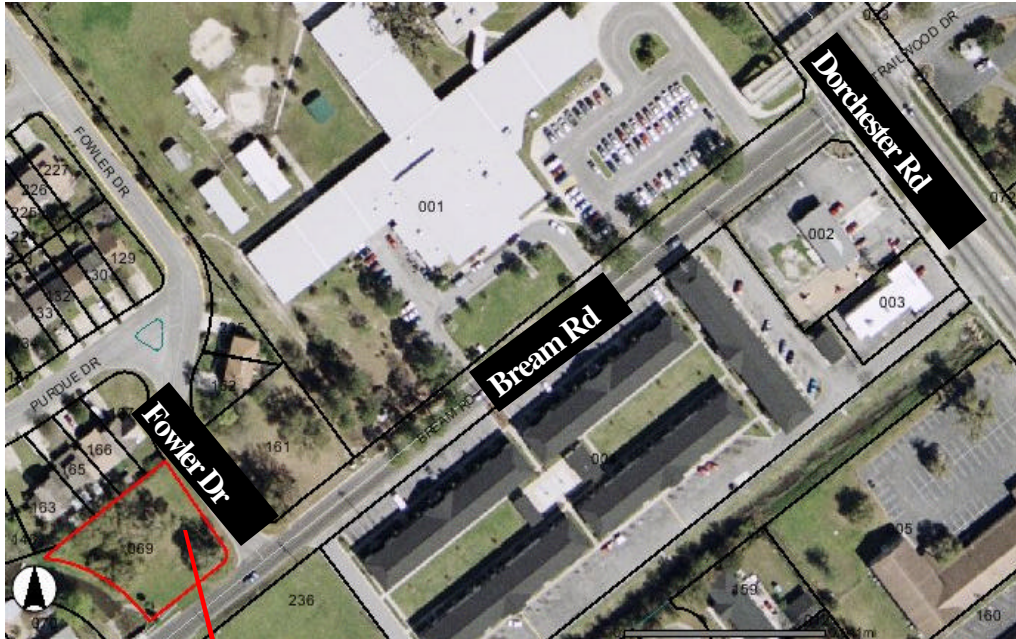


FOR Sale

**Vacant Lot at the corner of Bream Road
at Fowler Drive (Just off Dorchester Rd)
North Charleston, SC**



Property Description:

- Ideal location for a 4,000SF, two-story, office building
- .36 acre Corner lot with Impressive Oaks
- Ideal for professional offices
- Public Utilities available on site
- Owner willing to do JV or Build to Suit
- One block off of Dorchester Road

Price

\$89,000

TMS#:

408-10-00-069

Zoned:

ON,
Neighborhood Office

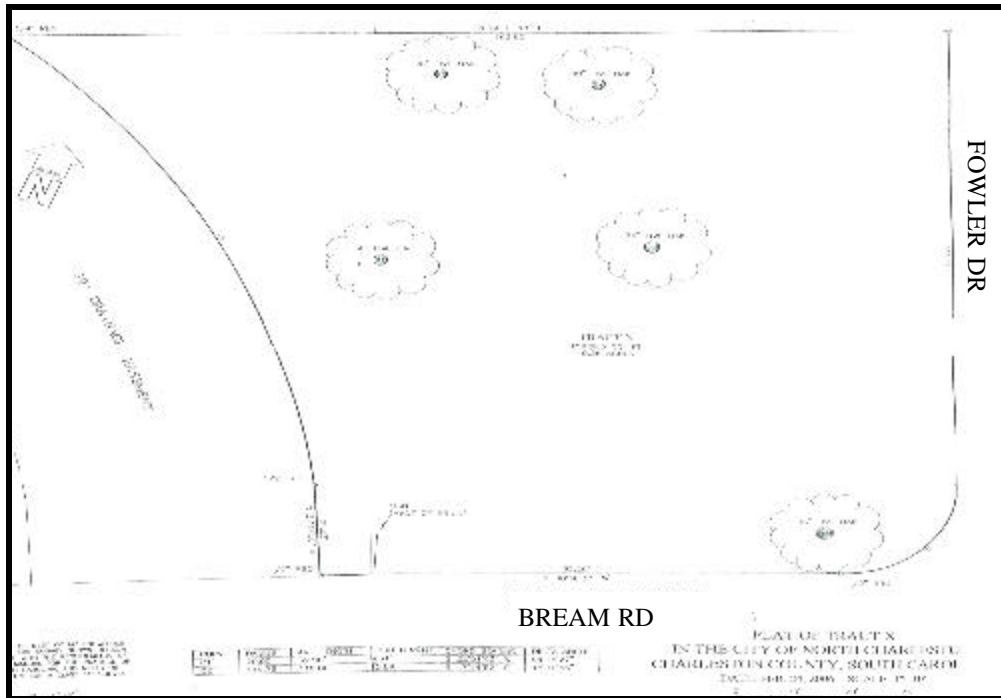
CONTACT:
Charlie Moore, CCIM
843.805.6060
clmccim@battenandmoore.com

NAI BATTEN & MOORE, LLC
COMMERCIAL REAL ESTATE SERVICES, WORLDWIDE

P.O. Box 509 Charleston, SC 29402 (843) 805-6060 (843) 577-6656 www.battenandmoore.com

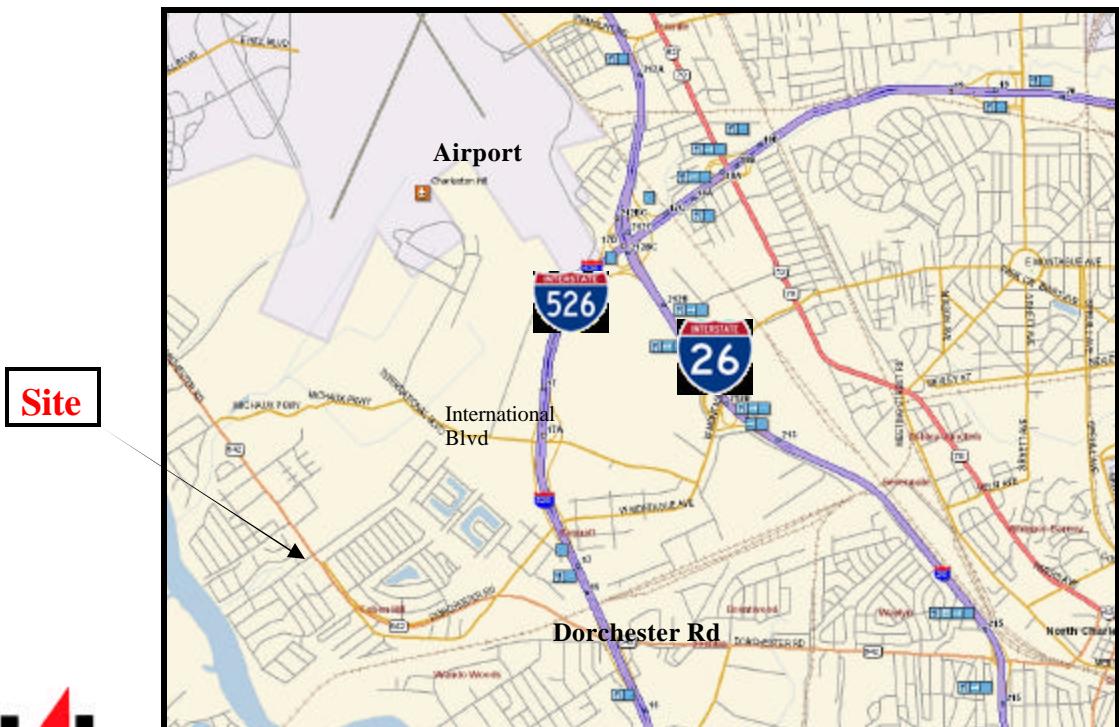
The information contained herein has been obtained from sources deemed reliable but not warranted for accuracy by Batten & Moore, LLC.

Bream Road at Fowler Drive North Charleston, SC



directions

From Dorchester Road, head west towards Summerville; take a left on Bream Road and a right on Fowler Drive



Map

NAI BATTEN & MOORE, LLC
COMMERCIAL REAL ESTATE SERVICES, WORLDWIDE

P.O. Box 509 Charleston, SC 29402 (843) 805-6060 (843) 577-6656 www.battenandmoore.com

The information contained herein has been obtained from sources deemed reliable but not warranted for accuracy by Batten & Moore, LLC.