

2001 SUMMERVILLE AVENUE
CHARLESTON, SC



FOR LEASE

Property Description

- **21,450 SF building with excellent interstate visibility**
- **1st Floor: 5, 525 SF of nicely finished office/showroom and 10,400 SF of warehouse**
- **2nd Floor: 5,525 SF of office space with possible separate entrance**
- **Executive offices, multiple staff offices with large open showroom**
- **Fenced parking at front door**
- **Convenient to Downtown Charleston, North Charleston, W Ashley and quick I-26 Access**
- **Convenient to Port Facilities**
- **Public utilities**
- **Owner will consider subdivision**
- **Available immediately**

Net Lease Rate

1st Floor:
Office/Showroom \$10/SF
2nd Floor:
Office \$9/SF
Warehouse:
\$6.50/SF

TMS #

466-16-00-101
City of Charleston

Zoning

General Business



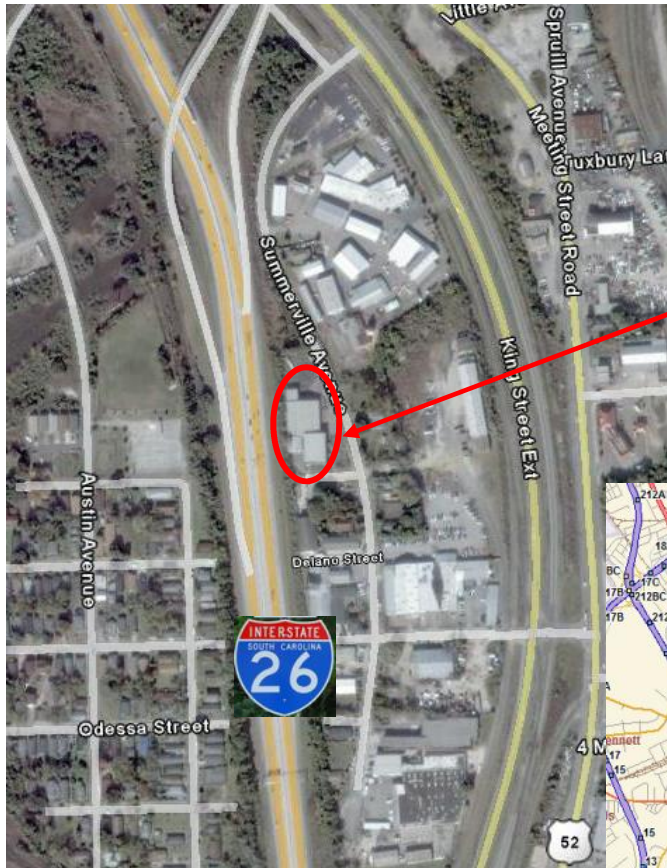
CONTACT:
CHARLIE MOORE, SIOR
OR ASHLEY WILSON
843.805.6060

P.O. Box 509 Charleston, SC 29402 (843) 805-6060 (843) 577-6656 www.battenandmoore.com

The information contained herein has been obtained from sources deemed reliable but not warranted for accuracy by Batten & Moore.

2001 SUMMERVILLE AVE
CHARLESTON, SC

Site



I-26 Frontage and Visibility
With Convenient
Interstate Access.
Minutes to Downtown
Charleston, North Charleston
and West Ashley.

NAI BATTEN & MOORE, LLC
COMMERCIAL REAL ESTATE SERVICES, WORLDWIDE

CONTACT:
CHARLIE MOORE, SIOR
OR ASHLEY WILSON
843.805.6060

P.O. Box 509 Charleston, SC 29402 (843) 805-6060 (843) 577-6656 www.battenandmoore.com
The information contained herein has been obtained from sources deemed reliable but not warranted for accuracy by Batten & Moore.

FOR LEASE