

238 MATHIS FERRY RD UNIT# 104
MT. PLEASANT, SC



FOR SALE

Description

- Ideal professional space.
- 1647 SF Two Level Office Condo with plentiful natural light.
- Three offices, reception area, conference/office room and restroom downstairs
- Large room upstairs easily subdivided into single offices or “bullpen.”
- Ample Parking at the door.
- Building overlooks a lovely pond
- Located in Mt. Pleasant close to the Arthur Ravenel Bridge, Wingo Way with quick access to Charleston Peninsula.

TMS#

- 514-00-00-181

Sales Price

- \$420,000

Utilities

- All Public

Zoning

- Area Wide Business

2007 Expenses

- Storm Water: \$43.02
 - Flood: \$933.00
- Regime: \$343.81/month
 - Taxes: \$3859.10
- Liability Ins: \$1300.00

NAI **BATTEN & MOORE, LLC**
COMMERCIAL REAL ESTATE SERVICES, WORLDWIDE

P.O. Box 509 Charleston, SC 29402 (843) 805-6060 (843) 577-6656 www.battenandmoore.com

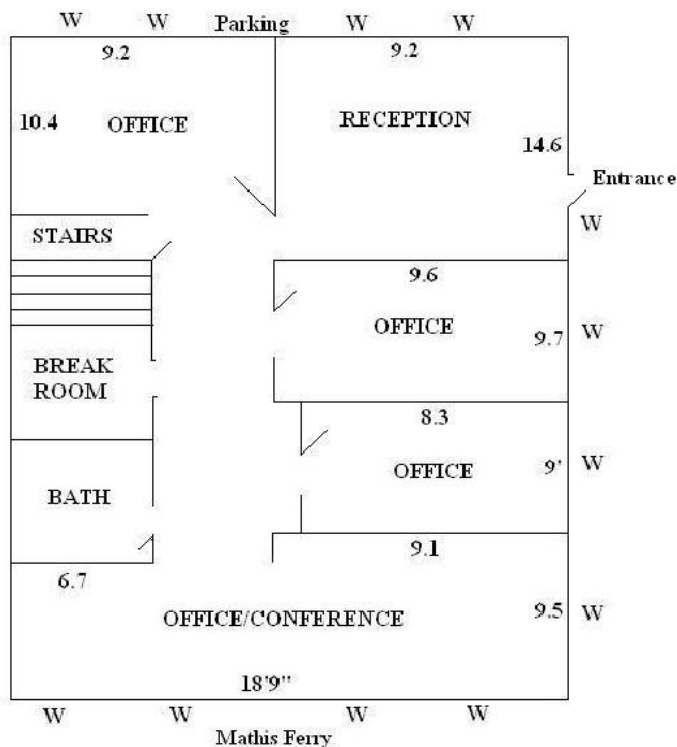
The information contained herein has been obtained from sources deemed reliable but not warranted for accuracy by Batten & Moore, LLC.

**FOR INFORMATION
CONTACT:
KIT REGNERY OR
BUDDY BEBERGAL
843.805.6060**

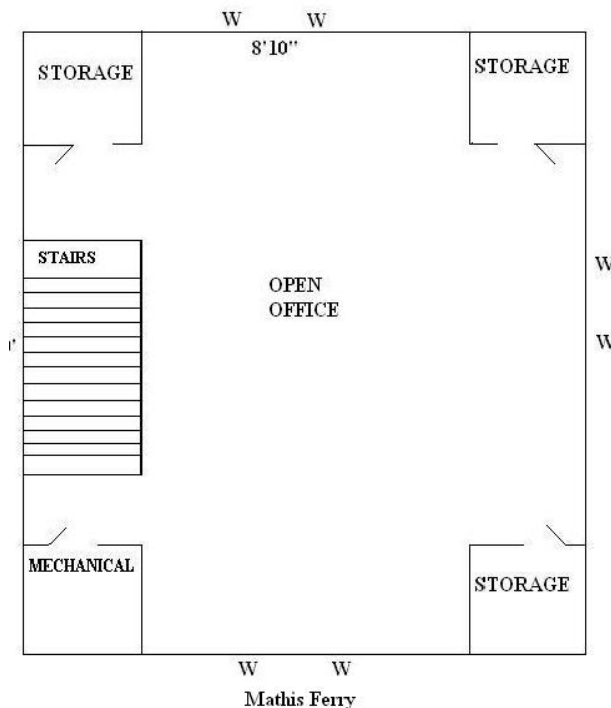
238 MATHIS FERRY RD UNIT # 104
CHARLESTON, SC

FLOORPLANS

First Floor



Second Floor



NAI BATTEN & MOORE, LLC
COMMERCIAL REAL ESTATE SERVICES, WORLDWIDE

P.O. Box 509 Charleston, SC 29402 (843) 805-6060 (843) 577-6656 www.battenandmoore.com

FOR INFORMATION
CONTACT:

KIT REGNERY OR
BUDDY BEBERGAL
843.805.6060

The information contained herein has been obtained from sources deemed reliable but not warranted for accuracy by Batten & Moore, LLC.