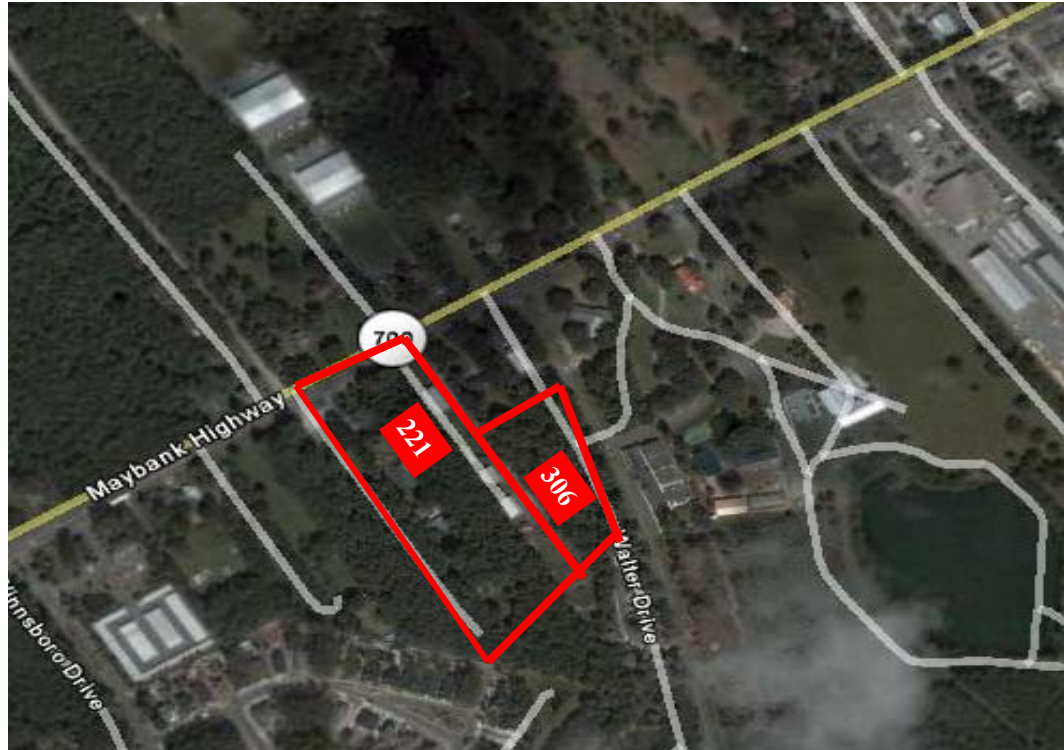


3226 MAYBANK HWY
CHARLESTON, SC



Description

- Two contiguous parcels that are : 1). ± 1.78 acres with approximately 120 FT of frontage on Maybank Highway
- 2). ± .86 acres with frontage on Walter Drive.
- All High Land.
- Dynamic Growth Corridor

TMS#

- 279-00-00-221 and
279-00-00-306
Charleston County

Sale Price

- \$475,000

Zoning

- Neighborhood Commercial

Public Utilities

- All to Site

FOR INFORMATION
CONTACT:
KIT REGNERY OR BUDDY BEBERGAL
(843) 805-6060



P.O. Box 509 Charleston, SC 29402 (843) 805-6060 (843) 577-6656 www.battenandmoore.com

The information contained herein has been obtained from sources deemed reliable but not warranted for accuracy by Batten & Moore, LLC.

FOR SALE